



# EMS SQL Manager for InterBase/Firebird

Become more productive than ever before!

## TOP FEATURES

- ▶ Effective management tool for InterBase/Firebird databases and all database objects
- ▶ Easy-to-use wizards performing InterBase and Firebird services in background mode
- ▶ Powerful stored procedure and trigger debugger
- ▶ Visual Database Designer
- ▶ Flexible interface for viewing, editing and printing data with Unicode support
- ▶ Ability to create and run queries with advanced visual constructor or professional SQL text editor
- ▶ Impressive data export and import capabilities. Support of most popular file formats
- ▶ Database snapshot creation in form of SQL scripts
- ▶ Effective security management
- ▶ Report designer with clear in use report construction wizard
- ▶ FREEWARE version
- ▶ Free One Year of Maintenance already included!

## OVERVIEW

Modern database management systems built on SQL technology are the foundation for company's data warehouse environment and play an important role in day-to-day business operations. Such environments need a solution that simplifies management process and increases database administrator productivity. Although organizations can install and use the DBMS as delivered, often the functionality needed to adequately support database development and maintenance is not provided by the DBMS product alone. Concepts of database management maintain the focus on real-world cases such as database design, data integrity, concurrent updates, data security and many other issues. With the help of the appropriate database tools a DB developer can reduce errors, speed up the complex work of analyzing, designing and implementing database applications. Specialized DBA tools will help reduce the costs associated with implementing efficient database administration.

**EMS SQL MANAGER** is a powerful tool for InterBase/Firebird database system administration and development. It simplifies database management tasks throughout the database life-cycle, from initial creation to everyday servicing, maintenance and data manipulation. EMS SQL Manager offers plenty of powerful tools for database administrators and developers to satisfy all their needs. It makes creating and editing InterBase and Firebird database objects easy and fast, and allows you to run SQL scripts, manage users and their privileges, build SQL queries visually, extract, print and search metadata, export data to 17 available file formats and import them, view and edit BLOB fields, and much more. The program has a user friendly interface with a well-described wizard system, so clear in use that even a newbie will not be confused with it. EMS SQL Manager will make your work with InterBase/Firebird as easy as it can be!

## KEY FEATURES

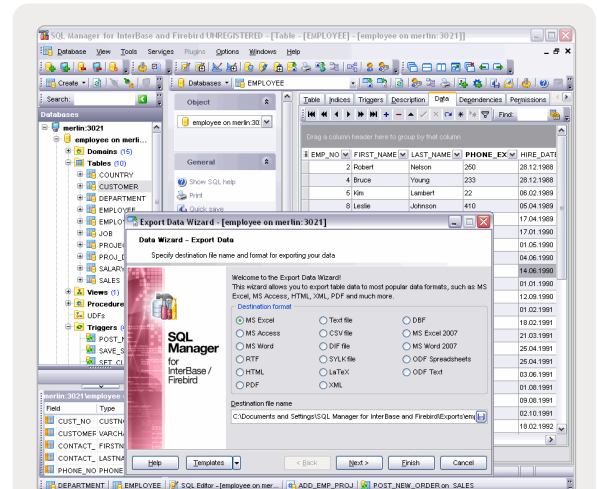
SQL Manager works with Firebird server versions up to 4 and InterBase server versions up to 2020 and supports all of the latest innovations of these database management systems. It provides you with a unique ability to contribute to efficient InterBase/Firebird server administration and development using a variety of available tools. You can work with different databases and InterBase/Firebird servers simultaneously on multiple connections to ensure effective data processing. The program has an easy-to-use graphical interface and a lot of features for database maintenance and administration operations.

## EASY MANAGEMENT OF INTERBASE/FIREBIRD OBJECTS AND SERVICES

In a modern company, InterBase and Firebird servers can have a large number of services and corresponding objects, such as databases, security elements, tables, views and triggers, domains and procedures, server activity and configuration information, exception objects and many others. With the help of SQL Manager you can easily manage most of InterBase/Firebird objects and native services. You can manipulate databases and schemas, tables and all their subobjects, check the data integrity, view all object dependencies in one diagram, create backups of your databases and restore databases from a previously created backup, collect various statistics on a database in general and on database activities, validate the database for verifying the integrity of data structures and much more.

## ADVANCED DATA MANIPULATION TOOLS

One of the prime features of SQL Manager is the possibility to view, search and edit the database content visually so you can retrieve the most relevant data. The program provides powerful capabilities for examining and modifying database content: BLOB viewer/editor with several modes of viewing BLOB data, plenty of useful tools such as data grouping, summarizing, fast searching and filtering, master-detail view to work with two linked tables at the same time, table and card data views, ability to copy and paste selected records, duplicate any database member, advanced printing system and many other useful features.



Specialized DBA tools will help reduce the costs associated



# EMS SQL Manager for InterBase/Firebird

continues

Become more productive than ever before!

## SYSTEM REQUIREMENTS

### HARDWARE

- ▶ 512 MB RAM or more; 1024 MB or more recommended
- ▶ 200 MB of available HD space for program installation

### SOFTWARE

- ▶ Microsoft Windows XP
- ▶ Microsoft Windows Server 2003
- ▶ Microsoft Windows Server 2008
- ▶ Microsoft Windows Server 2008 R2
- ▶ Microsoft Windows Server 2012
- ▶ Microsoft Windows Server 2012 R2
- ▶ Microsoft Windows Server 2016
- ▶ Microsoft Windows Server 2019
- ▶ Microsoft Windows Vista
- ▶ Microsoft Windows 7
- ▶ Microsoft Windows 8/8.1
- ▶ Microsoft Windows 10
- ▶ Microsoft Windows 11
- ▶ 32-bit InterBase/Firebird client library

### SUPPORTED INTERBASE AND FIREBIRD VERSIONS

- ▶ InterBase versions up to 2020
- ▶ Firebird server version up to 4

**SQL Manager.net**<sup>™</sup>  
EMS® Software Development

### EMS Software Development, LLC.

281 Rossiyskaya st., Chelyabinsk,  
454091, Russia

Tel: 7-351-261-9864

web: [www.sqlmanager.net](http://www.sqlmanager.net)

e-mail: [sales@sqlmanager.net](mailto:sales@sqlmanager.net)

## EFFECTIVE SECURITY MANAGEMENT

SQL Manager works with InterBase/Firebird security objects and helps you protect data from unauthorized disclosure and tampering. The program includes User Manager that allows defining user properties and membership, Role Editor to set different roles for users, as well as Grant Manager to set the user access grants for certain database objects.

## EXCELLENT VISUAL AND TEXT TOOLS FOR QUERY BUILDING

SQL Manager provides several tools you may need to manage your SQL queries. The tools allow you to create and edit the SQL text of a query, prepare and execute queries and view the results of query execution. SQL text Editor supports code completion and formatting, syntax highlight and code folding. Visual Query Builder can be used for building complicated queries visually without deep knowledge of SQL syntax. You can view the execution plan for each query created in the application and export the result data to any available format.

## IMPRESSIVE DATA EXPORT AND IMPORT ABILITIES

SQL Manager has the ability to import and export data to/from InterBase or Firebird databases. The program allows to easily export and import data to and from most popular file formats like MS Excel, MS Access, DBF, XML, ODF, TXT, CSV, etc. In addition, you can export data from a table/view or from a query result to SQL script as a number of INSERT statements. Import/export settings can be saved as a template at any time for future use.

## EASY-TO-USE WIZARDS PERFORMING INTERBASE/FIREBIRD ADMINISTRATIVE TASKS

Most administrative functions consist of repetitive sequences of tasks. With SQL Manager you can perform these tasks quickly and easily with friendly wizards, such as Extract Database Wizard that allows you to extract database objects and/or data to an SQL script, e.g. for backup purposes, and Create Report Wizard which can create a report containing required datasets, bands and fields on them. Wizards will also help you to generate a detailed HTML report about the selected database metadata, shutdown databases and bring them online, rebuild fragmented indices and much more.

## VISUAL DATABASE DESIGNER TO HANDLE DATABASE STRUCTURE IN A FEW CLICKS

Visual Database Designer is a handy tool that allows you to build database structure visually to represent the content of your database and its objects. Here is a short list of Visual Database Designer features: database diagram creation using the Reverse engineering tool; dividing diagram into different subject areas located on separate pages; creating/editing/dropping tables and table fields and links between them; saving as image or printing database diagram and a lot of visual customization options.

## MAINTENANCE INCLUDED

Software maintenance is a cost-effective and comprehensive service that includes technical support, software updates, and many other benefits. Within software maintenance service, you automatically receive the newest versions of EMS software upon their release at no additional cost. This allows you and your company to keep up with the latest software technology developments, take advantages of usability improvements, and manage software licenses more easily. SQL Manager already includes one year of Maintenance for free!

## ABOUT EMS

EMS /Electronic Microsystems/ is an Information Technology Company with software development as one of its activity fields. As an innovative, customer-focused company and the developer of leading database administration tools, EMS is the choice of thousands of companies in more than 90 countries. EMS customers include companies of all sizes from vast development teams in the world's largest organizations to progressive one-person shops. We strive to deliver exceptional quality and value to our clients, helping them to succeed in their development initiatives.

## ADDITIONAL INFORMATION

For more information about EMS SQL Manager for InterBase/Firebird, visit  
<http://www.sqlmanager.net/products/ibfb/manager>